

# Motor101A

## Power Cycle Data Logger System



The Motor101A measures and records on and off status changes for motors or other equipment drawing up to 200 Amps. The state change occurs when the current switch exceeds the 150 mA set point. This allows for most basic equipment to be monitored.

The current switch monitors whether there is current passing through a wire around which it is clamped. When the current exceeds 150 mA's, the output changes and provides a voltage for the Motor101A to measure. The device can hold up to 465,578 state changes, but memory will only be used if the status has changed. The device can be programmed to check for status changes 4 times per second up to once every 24 hours.

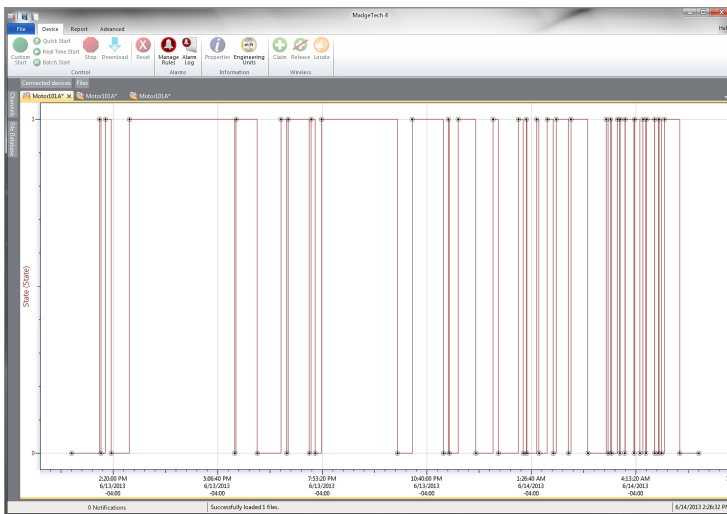
### Features

- No External Power Required
- 150 mA Trip Point
- Compatible up to 200 Amps
- Real Time Operation
- Miniature Size
- Reusable
- User-friendly
- Low Cost

### Benefits

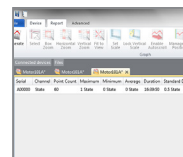
- Simple Setup and Installation
- Minimal Long-Term Maintenance
- Long-Term Field Deployment

## MadgeTech 4 Software Features

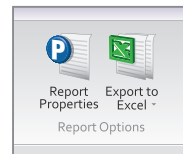


Graph View

- Multiple graph overlay
- Statistics
- Digital calibration
- Zoom in/ zoom out
- Lethality equations (F0, PU)
- Mean Kinetic Temperature
- Full time zone support
- Data annotation
- Min./Max./Average lines
- Summary view



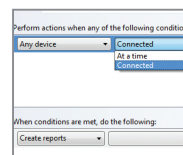
Statistics



Export to Excel

Time	Time Zone	Delta
1:13:37 PM	04:00	-00:00:00
1:18:37 PM	04:00	+00:01:00
1:13:37 PM	04:00	+00:02:00
1:23:37 PM	04:00	+00:03:00
1:13:37 PM	04:00	+00:04:00
1:28:37 PM	04:00	+00:05:00
1:18:37 PM	04:00	+00:06:00
1:23:37 PM	04:00	+00:07:00
1:23:37 PM	04:00	+00:08:00
1:23:37 PM	04:00	+00:09:00
1:23:37 PM	04:00	+00:10:00
1:28:37 PM	04:00	+00:11:00
1:25:37 PM	04:00	+00:12:00
1:28:37 PM	04:00	+00:13:00
1:23:37 PM	04:00	+00:14:00
1:28:37 PM	04:00	+00:15:00

Tabular Data View



Automation

## Applications

- Energy Audits
- Equipment Monitoring
- Heating and Cooling Systems
- Fans
- Power Supply On/Off
- Monitoring Gas, Water or Electric Pumps
- Time Studies

## SPECIFICATIONS

Specifications are subject to change without notice. Specific warranty remedy limitations apply. Call (603) 456-2011 or go to [madgetech.com](http://madgetech.com) for details.

MEASUREMENT	
<b>Amperage Range</b>	0.15-200 Amps
<b>Trip Point</b>	0.15 A (150 mA) fixed (200 mA AC for 50 Hz operation)
<b>Status Output (max.)</b>	N.O. 1.0 A @ 30 V AC/DC
<b>Engineering Units</b>	Native measurement units can be scaled to display measurement units of another type such as on/off, open/closed and more

GENERAL	
<b>Housing</b>	Split Core
<b>Start Modes</b>	Immediate start Delay start up to 18 months Multiple pushbutton start/stop
<b>Stop Modes</b>	Manual through software Timed (specific date and time)
<b>Multiple Start/Stop Mode</b>	Start and stop the device multiple times without having to download data or communicate with a PC
<b>Real Time Recording</b>	May be used with PC to monitor and record data in real time
<b>Password Protection</b>	An optional password may be programmed into the device to restrict access to configuration options. Data may be read out without the password.
<b>Memory</b>	465,578 readings; software configurable memory wrap
<b>Wrap Around</b>	Yes
<b>LEDs</b>	2 status LEDs

<b>Reading Rate</b>	4 Hz up to 1 reading every 24 hours
<b>Calibration</b>	Digital calibration through software
<b>Calibration Date</b>	Automatically recorded within device
<b>Battery Type</b>	3.6 V lithium battery included; user replaceable
<b>Battery Life</b>	10 years typical, dependent upon frequency and duty cycle
<b>Data Format</b>	State
<b>Time Accuracy</b>	±1 minute/month at 25 °C (77 °F) (Stand alone mode)
<b>Computer Interface</b>	USB (interface cable required); 115,200 baud
<b>Operating System Compatibility</b>	Windows XP SP3 or later
<b>Software Compatibility</b>	Standard Software version 2.04.06 or later Secure Software version 4.1.6.0 or later
<b>Operating Environment</b>	-15° C to +40° C (5° F to +104° F) 10 %RH to 90 %RH non-condensing
<b>Dimensions</b>	<b>Data Logger:</b> 1.4 in x 2.1 in x 0.6 in (35 mm x 54 mm x 15 mm) <b>Current Switch:</b> 2.1 in x 3.5 in x 1.0 in (54 mm x 89 mm x 26 mm)
<b>Material</b>	Polycarbonate
<b>Weight</b>	0.9 oz (24 g) - Logger only
<b>Approvals</b>	CE

**BATTERY WARNING:** FIRE, EXPLOSION AND SEVERE BURN HAZARD. DO NOT RECHARGE, DISASSEMBLE, HEAT ABOVE 100 °C (212 °F), INCINERATE, CRUSH, OR EXPOSE CONTENTS TO WATER.

## Ordering Information

<b>Motor101A</b>	PN 900381-00	Machinery On/Off Status Data Logging System (includes data logger, current switch and IFC200 interface cable)
<b>IFC200</b>	PN 900298-00	USB interface cable
<b>LTC-7PN</b>	PN 900352-00	Replacement battery for the Motor101A