

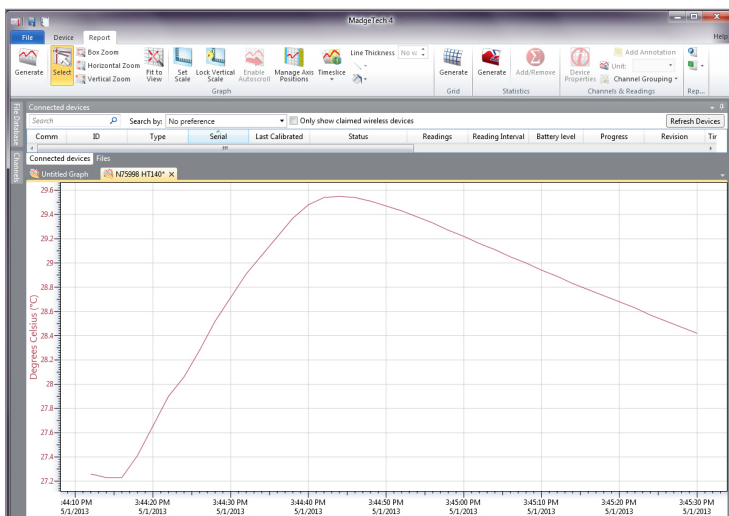
HiTemp140-PT

High Temperature Data Logger with Bendable Probe

The HiTemp140-PT is a submersible, temperature data logger that can operate up to 140 °C (284 °F) and has an accuracy of ± 0.1 °C (± 0.18 °F). The HiTemp140-PT comes in three different probe lengths, two probe styles feature a 24 inch bendable stainless steel probe and either a 1 inch or a 5 inch piercing tip. The HiTemp140-PT-12 features a 12 inch bendable stainless steel probe with a 1 inch piercing tip. All probes can measure extended temperatures up to 350 °C (662 °F) The probe is durable and can be spiraled, bent or angled in any direction, making it easy to log temperatures within bottles, vials or other hard to reach places. The HiTemp140-PT records date and time stamped readings, and has non-volatile solid state memory which retains data even if the battery becomes discharged.

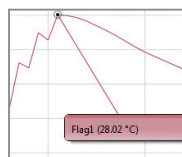
Using the latest MadgeTech Software, starting, stopping and downloading the HiTemp140-PT is simple and easy. To use, simply place the HiTemp140-PT in the IFC400 or IFC406 docking station (sold separately). Using the software, an immediate or delay start can be chosen, as well as the reading rate. Start the data logger, remove it from the docking station and the device is ready to be deployed. Graphical, tabular and summary data is provided for analysis and data can be viewed in °C, °F, K or °R. The data can also be automatically exported to Excel® for further calculations.

MadgeTech 4 Software Features

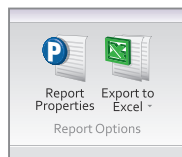


Graph View

- Multiple graph overlay
- Statistics
- Digital calibration
- Zoom in/ zoom out
- Lethality equations (F0, PU)
- Mean Kinetic Temperature
- Full time zone support
- Data annotation
- Min./Max./Average lines
- Summary view



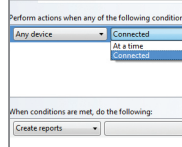
Cooling Flags



Export to Excel

| Time | Time Zone | Delta |
|------------|-----------|-----------|
| 1:53:37 PM | 0400 | -00:00:00 |
| 1:53:37 PM | 0400 | -00:00:00 |
| 1:53:37 PM | 0400 | -00:00:00 |
| 1:53:37 PM | 0400 | -00:00:00 |
| 1:53:37 PM | 0400 | -00:00:00 |
| 1:53:37 PM | 0400 | -00:00:00 |
| 1:53:37 PM | 0400 | -00:00:00 |
| 1:53:37 PM | 0400 | -00:00:00 |
| 1:53:37 PM | 0400 | -00:00:00 |
| 1:53:37 PM | 0400 | -00:00:00 |
| 1:53:37 PM | 0400 | -00:00:00 |
| 1:53:37 PM | 0400 | -00:00:00 |

Tabular Data View



Automation



Features

- ± 0.1 °C (± 0.18 °F) Accuracy
- Operates up to 140 °C (284 °F)
- Submersible (IP68)
- User Replaceable Battery
- Rugged
- Programmable Start Time
- Programmable Stop Time
- Engraved Label
- 12 or 24 inch Bendable Probe
- Battery Life Indicator

Benefits

- Simple Setup and Installation
- Minimal Long-Term Maintenance
- Long-Term Field Deployment

Applications

- Autoclave Verification
- Implement HACCP Programs
- Food Preparation and Processing
- Environmental Studies
- Well Monitoring
- Dishwasher Testing
- Pasteurization

SPECIFICATIONS

Specifications are subject to change without notice. Specific warranty remedy limitations apply. Call (603) 456-2011 or go to madgetech.com for details.

| TEMPERATURE | |
|-------------------------|--|
| Temperature Sensor | 100 Ω Platinum RTD |
| Probe Measurement Range | -200 °C to +350 °C (-328 °F to +662 °F) BODY OF LOGGER CANNOT EXCEED 140 °C |
| Temperature Resolution | 0.01 °C (0.02 °F) |
| Calibrated Accuracy | ±0.1 °C/±0.18 °F (20 °C to +140 °C/68 °F to +284 °F) ±0.3 °C/±0.54 °F (-20 °C to +19.99 °C/-4 °F to +67.98 °F) ±0.4 °C/±0.72 °F (-40 °C to -20.01 °C/-40 °F to -4.02 °F) |

| GENERAL | |
|-----------------------------------|--|
| Start Modes | Software programmable immediate start Delay start up to 18 months in advance |
| Stop Modes | Manual or Timed (specific date and time) |
| Real Time Recording | May be used with PC to monitor and record data in real time |
| Password Protection | An optional password may be programmed into the device to restrict access to configuration options. Data may be read out without the password. |
| Memory | 32,256 readings |
| Trigger Setting | High and Low limits may be set. Once data meets or exceed sets limits, the device will record to memory. Bi-level start and stop triggers can also be programmed. Users can specify the number of readings to take after the device triggers |
| Readings in Trigger Settings Mode | 6,451 readings |
| Wrap Around | Yes |
| Reading Rate | 1 reading every second up to 1 reading every 24 hours |
| Calibration | Digital calibration through software |
| Calibration Date | Automatically recorded within device |
| Battery Type | 3.6V high-temperature lithium battery included; user replaceable |

| | |
|--------------------------------|--|
| Battery Life | 2 years typical (1 minute reading rate at 25 °C/77 °F) |
| Data Format | Date and time stamped °C, K, °F or °R |
| Time Accuracy | ±1 minute/month at 20 °C to 30 °C (68 °F to 86 °F) (Stand alone mode) |
| Computer Interface | IFC400 OR IFC406 USB docking station required; 125,000 baud |
| Operating System Compatibility | Windows XP SP3 or later |
| Software Compatibility | Standard Software version 4.1.8.0 or later Secure Software version 4.1.7.0 or later |
| Operating Environment | -40 °C to +140 °C (-40 °F to +284 °F) 0 %RH to 100 %RH, 0.002 PSIA to 100 PSIA |
| Dimensions (Body) | 1.9 in x 0.97 in dia. (48 mm x 24.6 mm dia.) |
| Dimensions* (PT-1 Probe) | Probe Tip: 1.7 in x 0.125 in dia. (42 mm x 3.2 mm dia.) Bendable Portion: 22 in x 0.062 in dia. (559 mm x 1.6 mm dia.) |
| Dimensions* (PT-5 Probe) | Probe Tip: 4.8 in x 0.125 in dia. with 1 in x 0.188 in dia. handle (121 mm x 3.2 mm dia. with 25 mm x 4.8 mm dia. handle) Bendable Portion: 22 in x 0.062 in dia. (559 mm x 1.6 mm dia.) |
| Dimensions* (PT-1-12 Probe) | Probe Tip: 1.7 in x 0.125 in dia. (42 mm x 3.2 mm dia.) Bendable Portion: 12 in x 0.062 in dia. (305 mm x 1.6 mm dia.) |
| Weight | 4.2 oz (120 g) |
| Material | 316 Stainless Steel, Radel |
| Approvals | CE |

*The probe should not be bent within 1 inch of either weld joint.

BATTERY WARNING: FIRE, EXPLOSION, AND SEVERE BURN HAZARD. DO NOT SHORT CIRCUIT, CHARGE, FORCE OVER DISCHARGE, CRUSH, PENETRATE, OR INCINERATE. BATTERY MAY LEAK OR EXPLODE IF HEATED ABOVE 150 °C (302 °F).

Ordering Information

| | | |
|--------------------------------------|--------------|---|
| HITEMP140-PT-1 | PN 900230-00 | Extended Range Temperature Data Logger with a 24 inch Bendable Probe with a 1 inch piercing tip |
| HITEMP140-PT-1-KR | PN 902152-00 | Extended Range Temperature Data Logger with a 24 inch Bendable Probe with a 1 inch piercing tip with key ring end cap |
| HiTemp140-PT-5 | PN 900243-00 | Extended Range Temperature Data Logger with a 24 inch Bendable Probe with a 5 inch piercing tip |
| HiTemp140-PT-5-KR | PN 902365-00 | Extended Range Temperature Data Logger with a 24 inch Bendable Probe with a 5 inch piercing tip with key ring end cap |
| HiTemp140-PT-1-12 | PN 902306-00 | Extended Range Temperature Data Logger with a 12 inch Bendable Probe with a 1 inch piercing tip |
| HiTemp140-PT-1-12-KR | PN 902400-00 | Extended Range Temperature Data Logger with a 12 inch Bendable Probe with a 1 inch piercing tip with key ring end cap |
| IFC400 | PN 900319-00 | Docking station with USB cable |
| IFC406 | PN 900325-00 | 6 Port, Multiplexer docking station with USB cable |
| ER14250-SM Formerly ER14250MR-145 | PN 900097-00 | Replacement battery for the HiTemp140-PT |