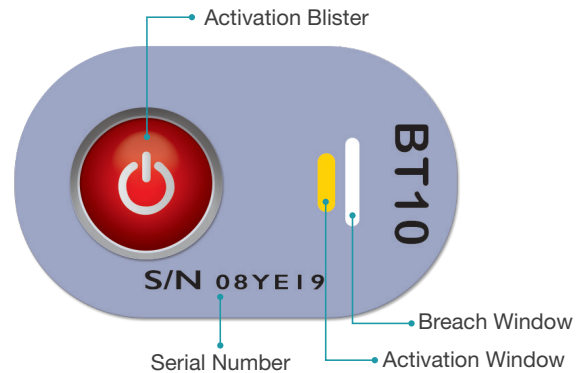


Product Specifications

TempDot. Plus Blood Temp 10

Threshold Temperature	10°C/ 50°F
Temperature Accuracy	± 0.5°C /1°F
Chemical Indicator	Blue liquid chemical encapsulated in a blister, Food Chemicals Codex, FDA approved (Title 21), GRAS (Generally Recognized As Safe)
Label Material	Polymeric assembly multilayer, aluminium-plastic laminate, non-toxic, latex & PVC free
Label Size	1.25 in x 0.75 in (32mm x 19mm)
Start Button	Blister ~0.1 in H (~2.5mm H)
Activation	Pressure with finger, in environment above threshold temperature
Application	Pressure sensitive adhesive backing. Apply to clean, dry surface.
Adhesive	DuploCOLL® 2353 - for reverse coating of labels employed for labeling blood bags
Recommended Storage (un-activated)	Ambient room temperature, cool, dark place, away from direct heat source and sunlight. Recommended 72°F(22°C) at 20-80% RH
Shelf Life	Pre activation: 3 years Post Activation: 1 year or until temperature breach is indicated
Moisture Resistance	Splashproof. Not suitable for immersion in water



Model 51064

- Quality assurance for blood temperature during transportation and storage.
- Simple push-button activation
- Indicator requires no special conditioning prior to use
- Cost-effective monitoring
- Maintain quality control in blood transportation and storage
- Real-time data to make quick, safe decisions
- Peace of mind
- Irreversible proof of meeting AABB Standards and the FDA's CFR 600.15(a) for monitoring temperature of whole blood during transportation and storage
- FDA 510(k) clearance

Application is as Easy as 1,2,3

1 Push the Button

Firmly squeeze the activation button until you feel a pop, then release.

2 Verify Activation

Arming window will change from yellow to dark green immediately. Dark green means activated. If not, go back to Step 1.

3 Apply to Blood Bag

Remove adhesive liner and adhere activated indicator to the lower third of blood bag.

DeltaTrak manufactures products under an ISO 9001:2015 registered quality management system

SS_51064_21B1

