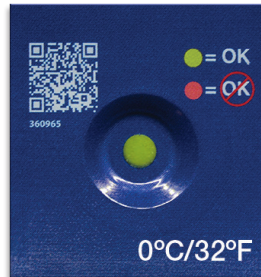


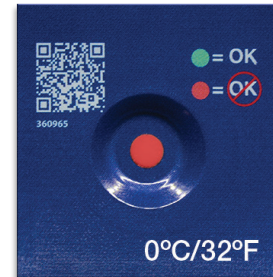
# Product Specifications

## TempDot Freeze Indicator

<b>Threshold Temperature</b>	32°F/0°C
<b>Temperature Accuracy</b>	± 2°F/1°C
<b>Size</b>	1.14 in x 1.18 in (29mm x 30mm)
<b>Characteristics</b>	Irreversible color change from green to red
<b>Storage (Prior to Use)</b>	Between 68°F to 77°F (20°C to 25°C), optimum shelf life when stored at 39°F/4°C DO NOT FREEZE
<b>Shelf Life</b>	1 year under recommended storage conditions
<b>Indicator</b>	Temperature-sensitive polymeric liquid crystal
<b>Application</b>	Pressure sensitive adhesive backing. Apply to clean, dry surface.



Before



After

Model 54001

32°F/0°C

- Responds to temperature excursions below 32°F (0°C)
- Fast-acting, irreversible color change
- Visual indicator for making immediate pass/fail decisions
- Adheres to product or packaging
- Environmentally safe, no toxic chemicals

### How to Use:

The TempDot Freeze Indicator provides an irreversible visual alert once the temperature descends below the defined threshold value of the label.

- 1) The label is always active and prior to use must be shipped, stored and handled in an environment above threshold temperature of 32°F/0°C. Keep the label between 68°F to 77°F (20°C to 25°C). For optimal shelf life store at 39°F (4°C). DO NOT FREEZE.
- 2) Remove the adhesive liner from the back of the label and adhere it to the product or package. Note: the product to be monitored must be above the 32°F/0°C threshold.
- 3) Once the label is exposed to temperature below the 32°F/0°C threshold, the green dot in the middle will irreversibly change to red.